

HOW TO MAKE A

BART TRAIN COSTUME!



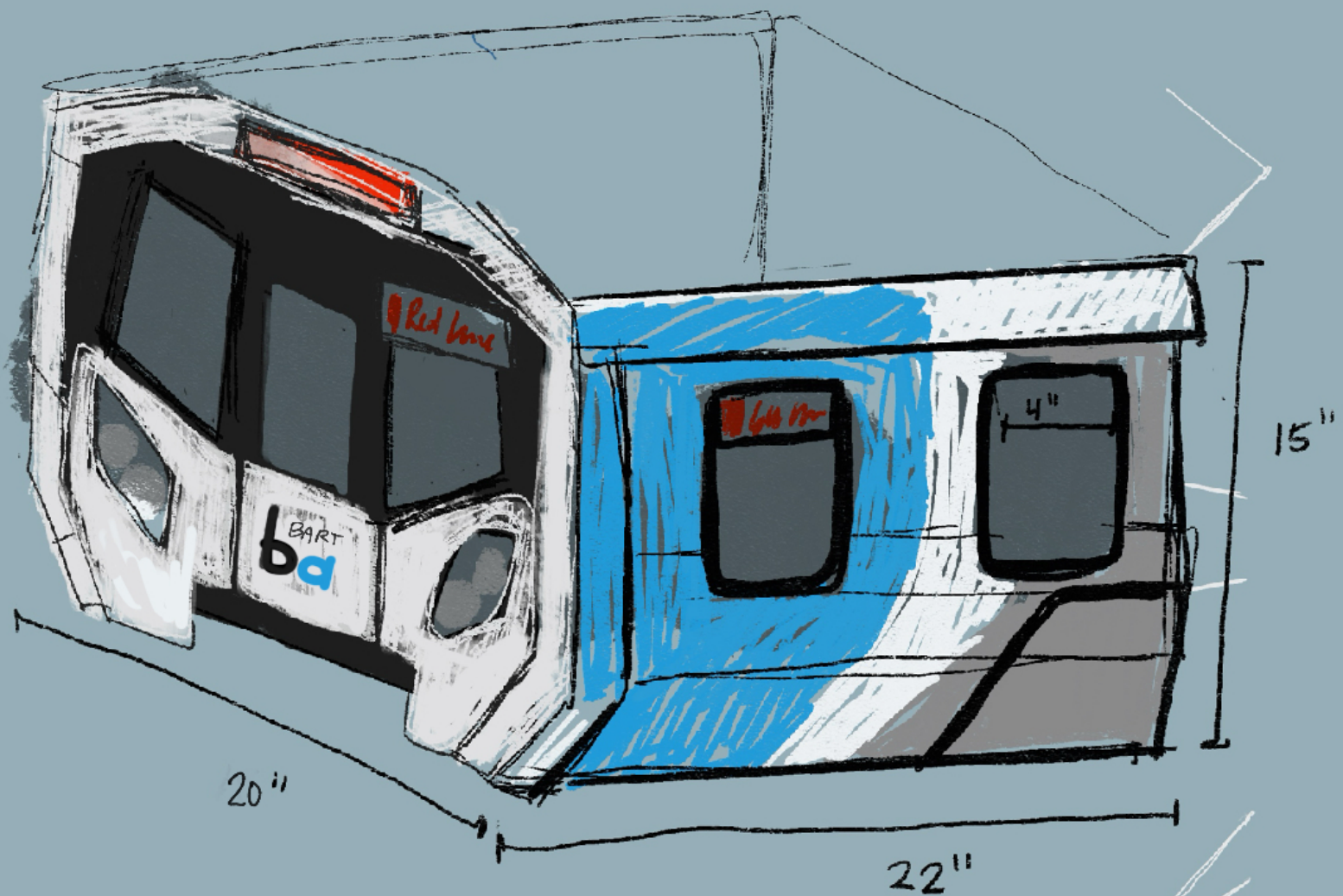
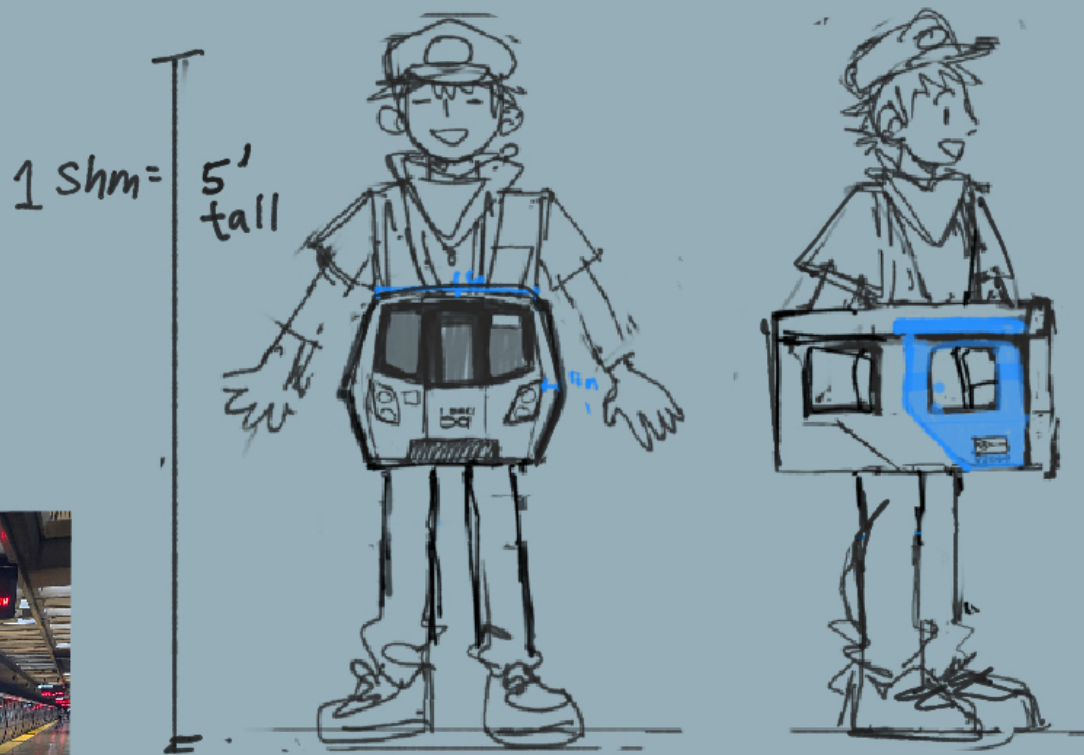
Big Shm!



@shmu-h (X)
@shm.uh (IG)
@sh1m.bsky.
Social
Shmuh.co
my website



Credit: Kevin Standlee on Flickr



Released as
CC BY-SA
(Attribution &
Share-Alike!)



SHOPPING List!

CONSTRUCTION

~ 5 pieces of 20" x 30" Foam Core Boards (0.2" thickness works fine)



Tape (I used a paintable white duct tape! + painters tape!)



Black & clear transparent paper/Plastic sheets



4 white, 1 black sheet (optional, you can just use paint!)

← You can use semitransparent file folders!

Macrame Rope/Ribbon (to make straps!)



TOOLS

Craft knife a must for cutting foam core boards! Change blade whenever it gets dull, and handle with care!



T-Square

(a ruler also works, but a T square helps cut nice straight lines!)



Paint brushes



OPTIONAL:

Paper Mache Supplies

(makes foam board stronger, + easier to make "round" shapes!)

Newspaper



Glue

Flour + Salt / Plaster of Paris

There's a lot of ways to paper mache! ultimatepapermache.com has great recipes.



OPTIONAL: ELECTRONICS!

If you don't want to build your own ...



PAINT

White Paint



Light Blue Paint



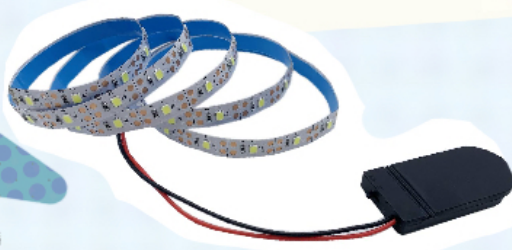
Silver Paint



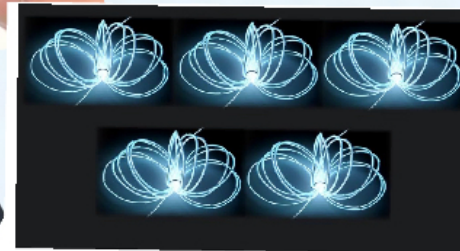
Black Paint



LED Nametags



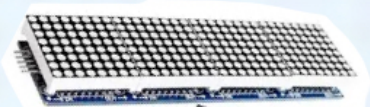
Battery operated LED strips



"EL Wire"

What I used:

2 LED matrices: (MAX 7219) 4x8x8 LED matrices



WS2812B LED Chips



ARDUINO UNO

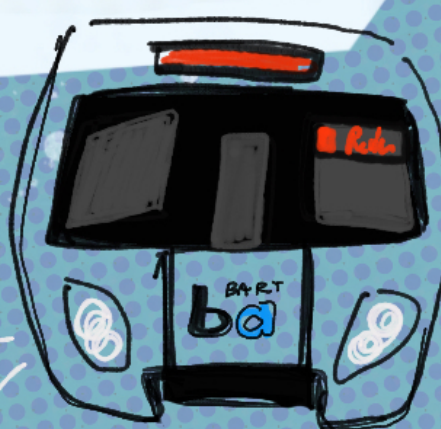


+ USB Power Bank

9V rechargeable batteries



+ adapters

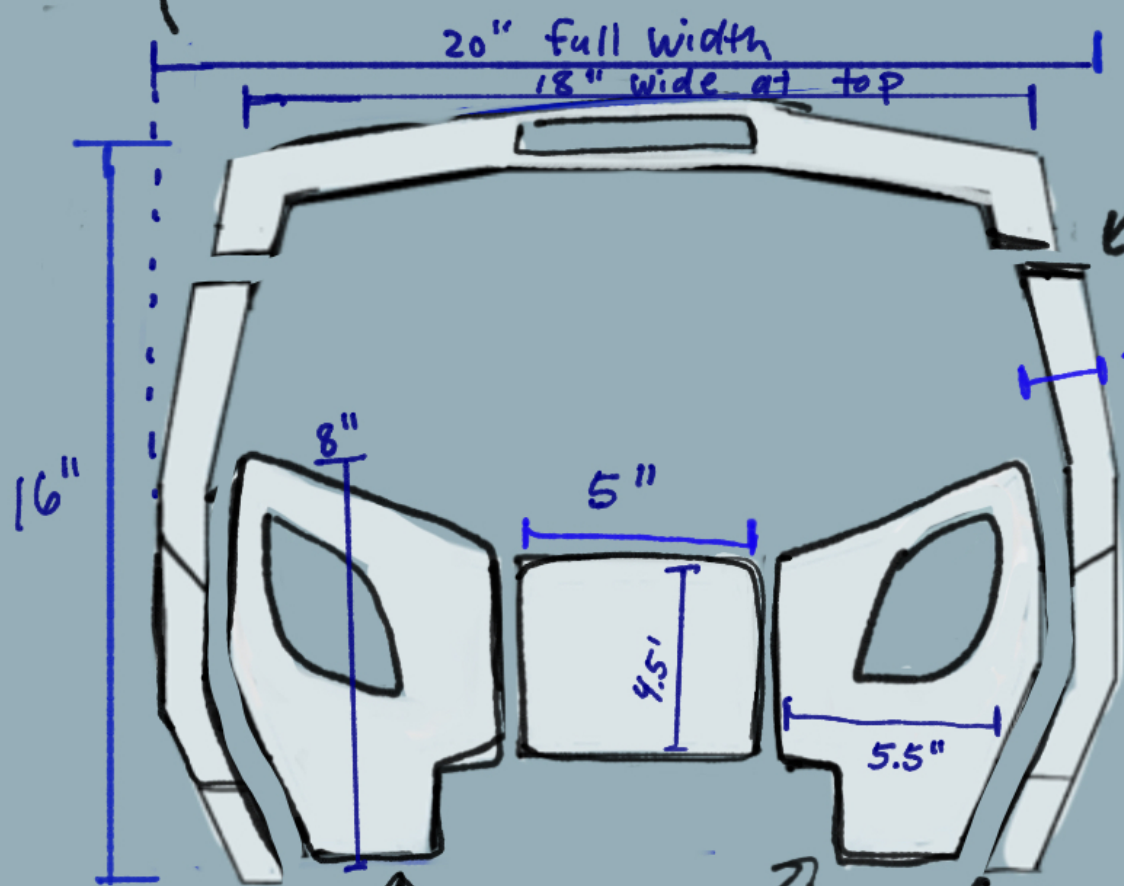


There are lots of commercially available, portable options!

The Front

① Cut these pieces out of Foam Board...

(I drew a to-scale template on drawing paper first, to help with cutting!)

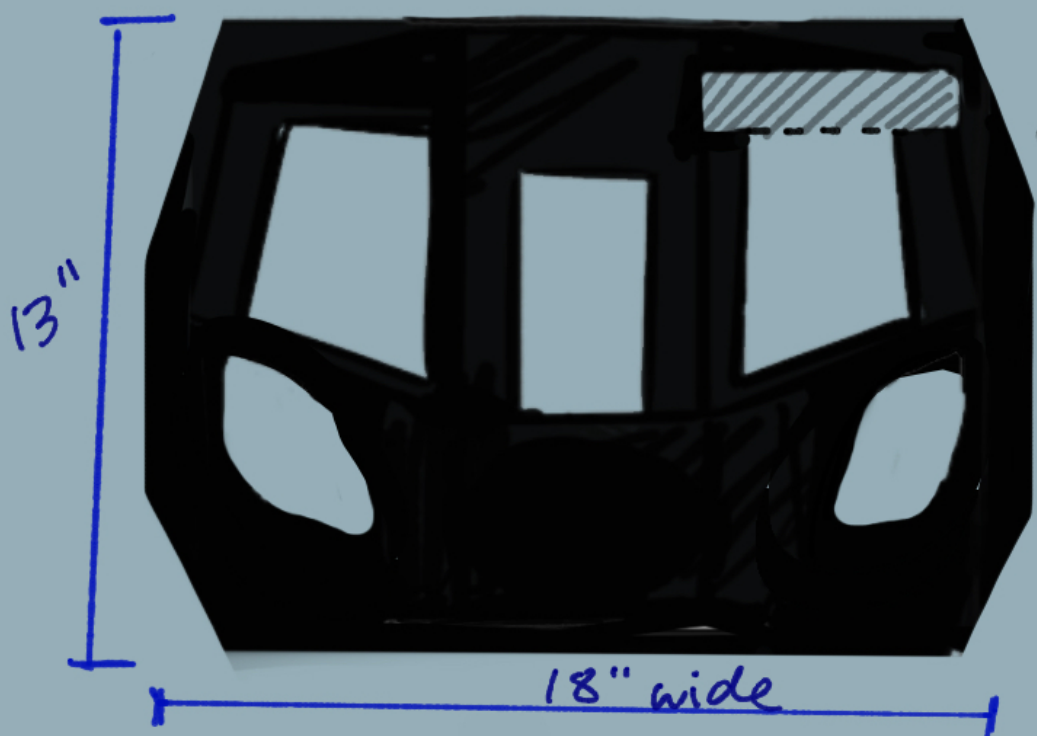


hint:
cut out a bunch
of 2" wide
foam strips,
then cut them
down + tape them
together to make
these "border"
pieces!

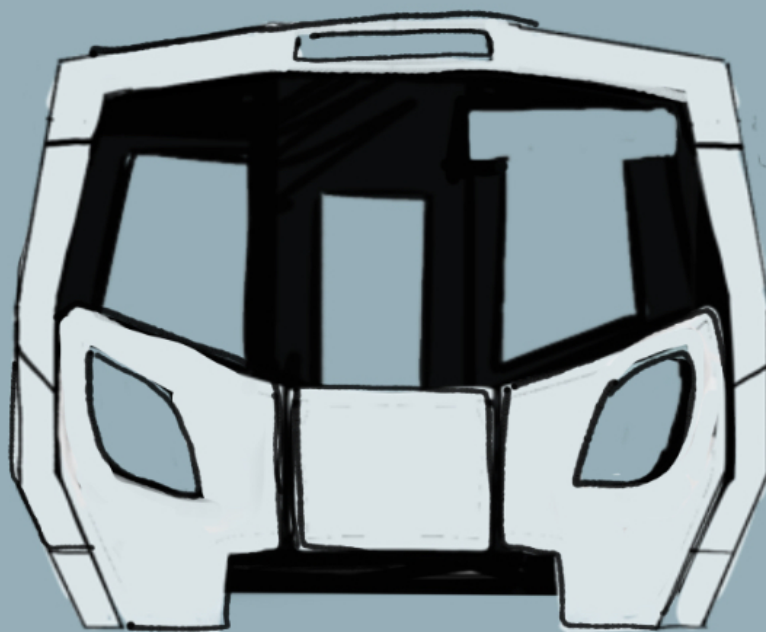


cut 2 of the same,
& flip one!

② Cut this out of black foam core (or white foam, painted black) before...



I cut out extra
space here to fit
the LED Sign!



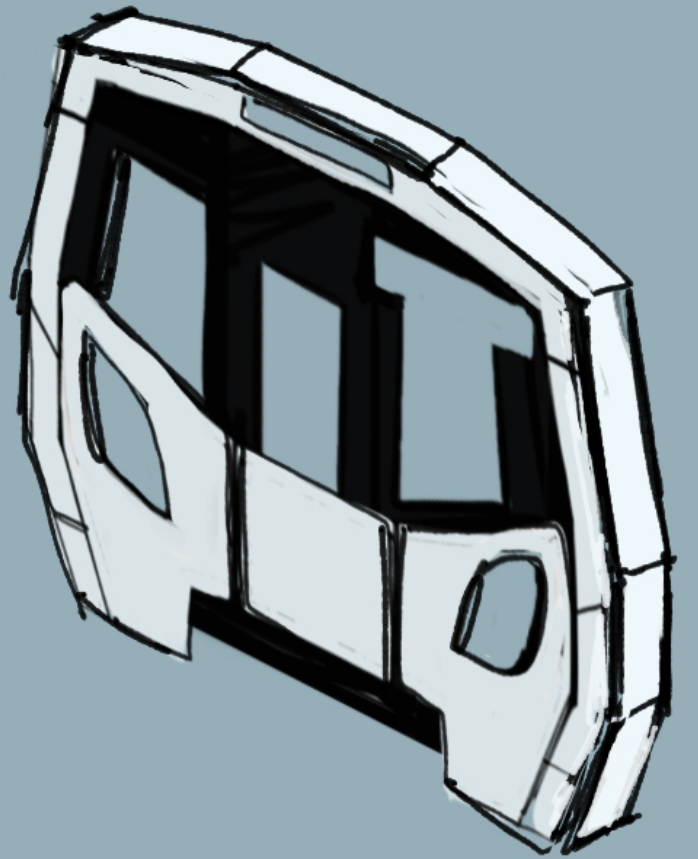
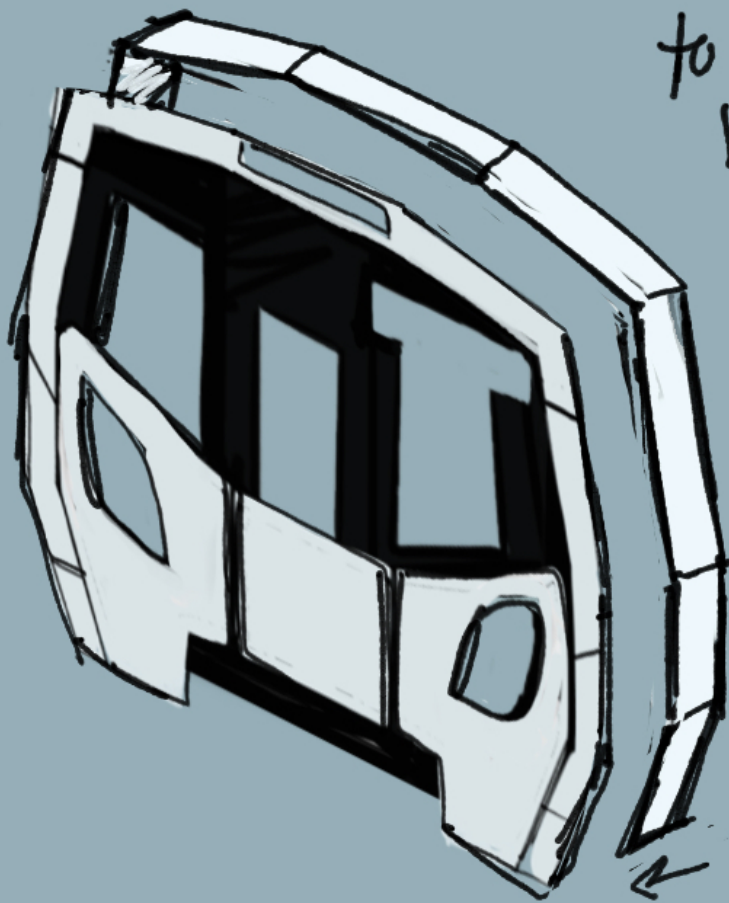
③ stacking the pieces
together!



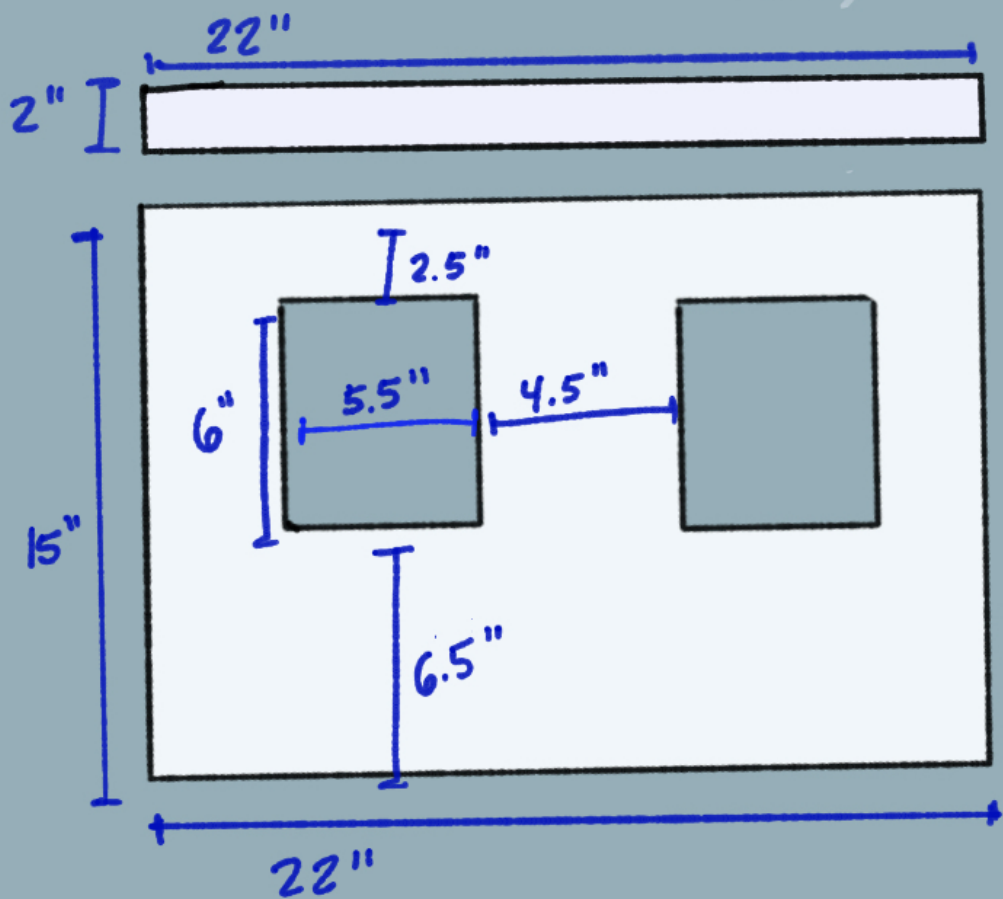
← The BART has these "borders" around the front face & along the top of each side!

Use more 2" strips to make this border around the edges

← (use tape to attach from the "inside"!

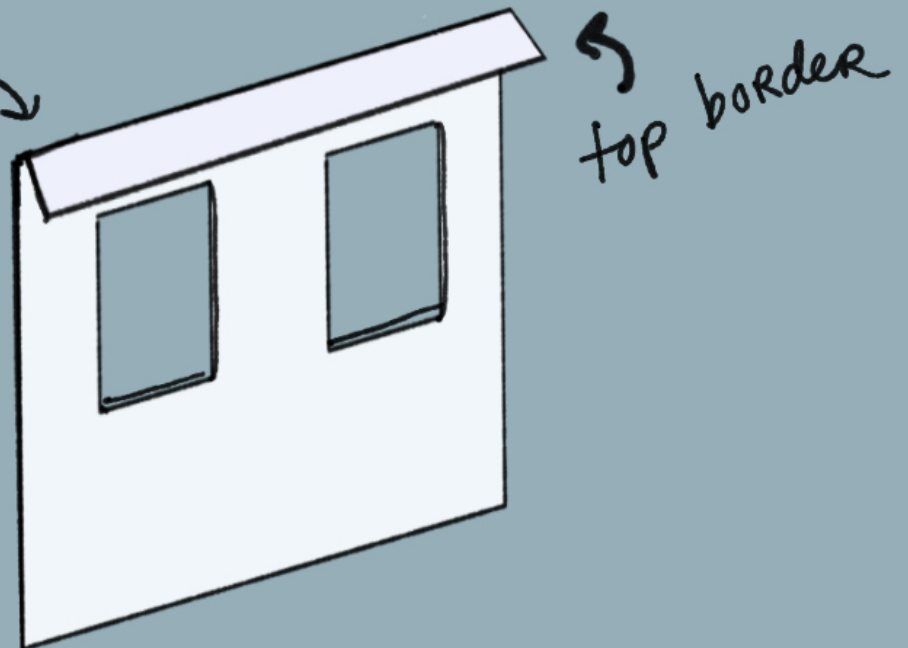


The Sides



← cut out 2 of each of these

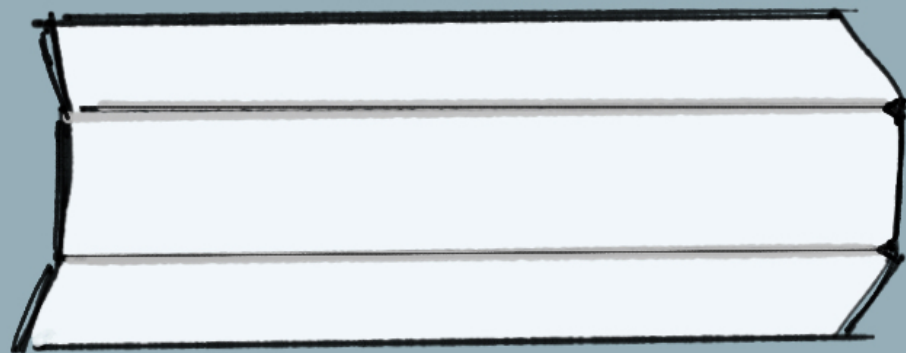
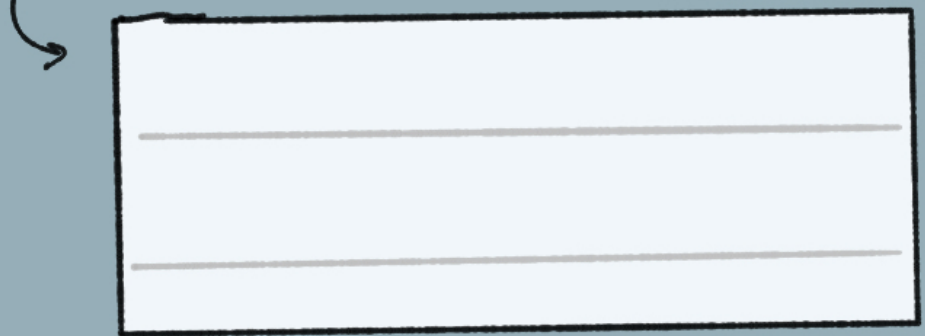
attach to the top like this



OPTIONAL: To create a more round "body," I added a panel to the sides

If you slice foam core, but not all the way through...

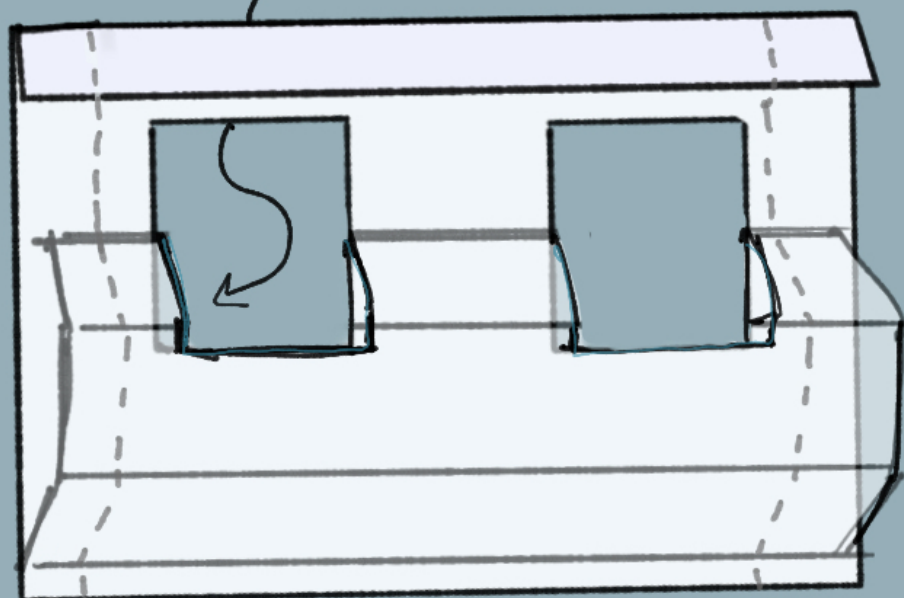
attach here



You can easily fold away from the cut



Cut out for the windows

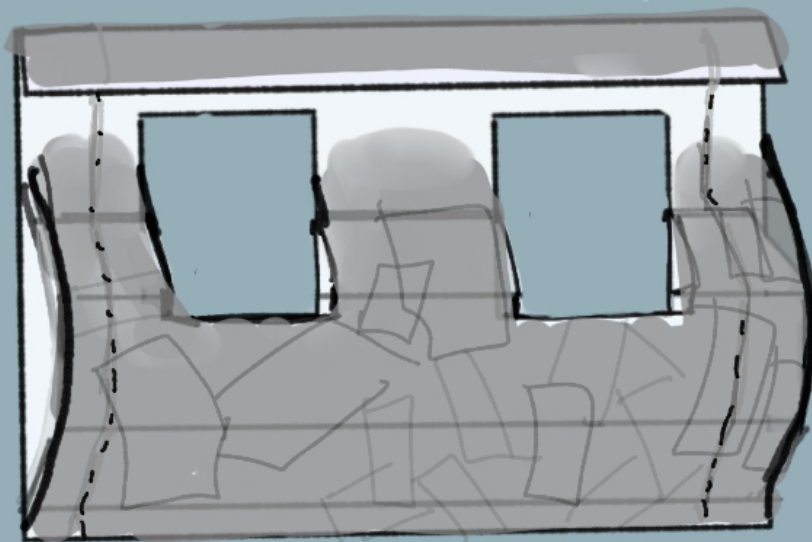
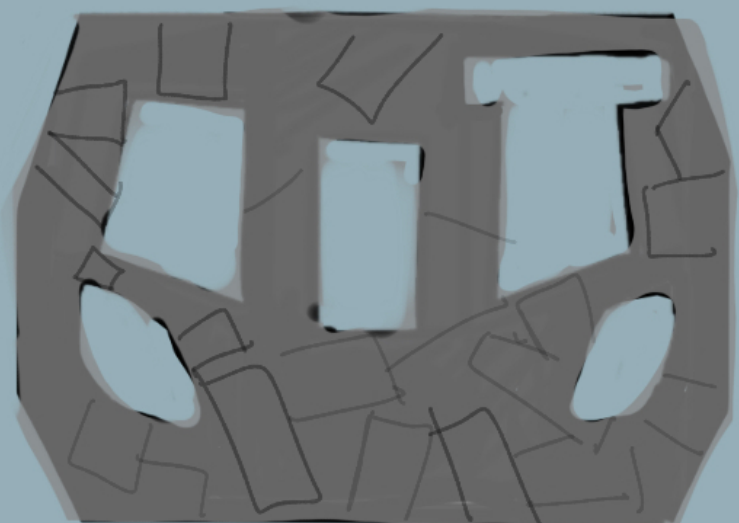
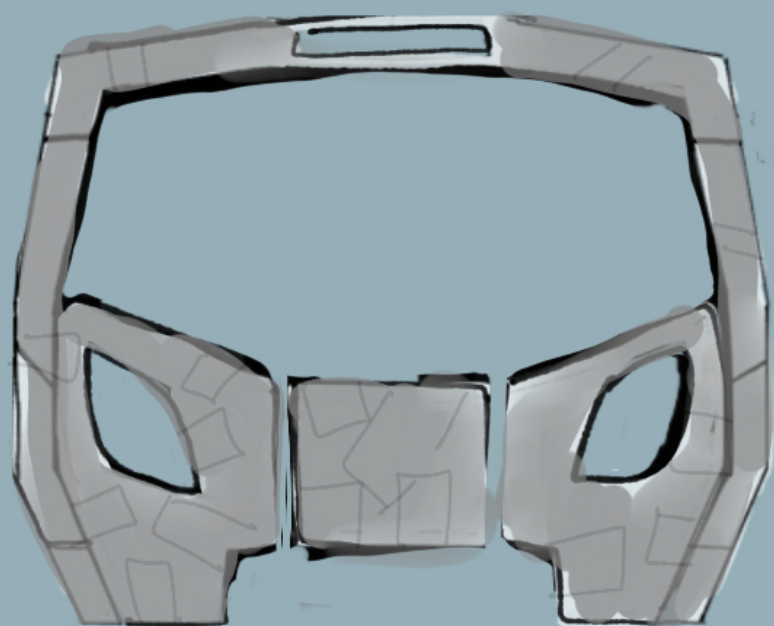


I also cut here so the whole costume can fold up easier!

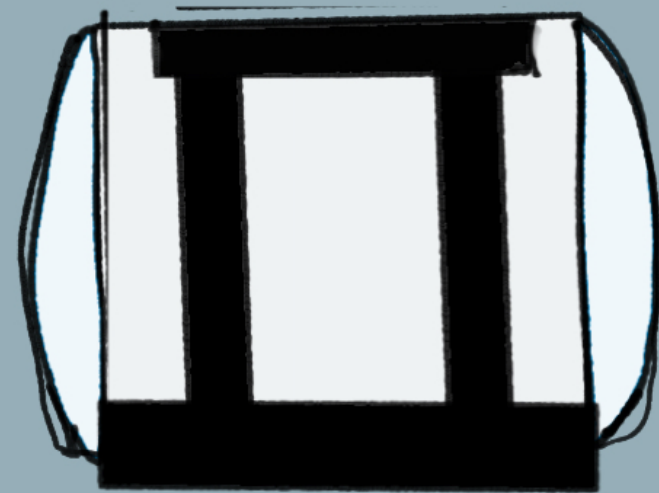
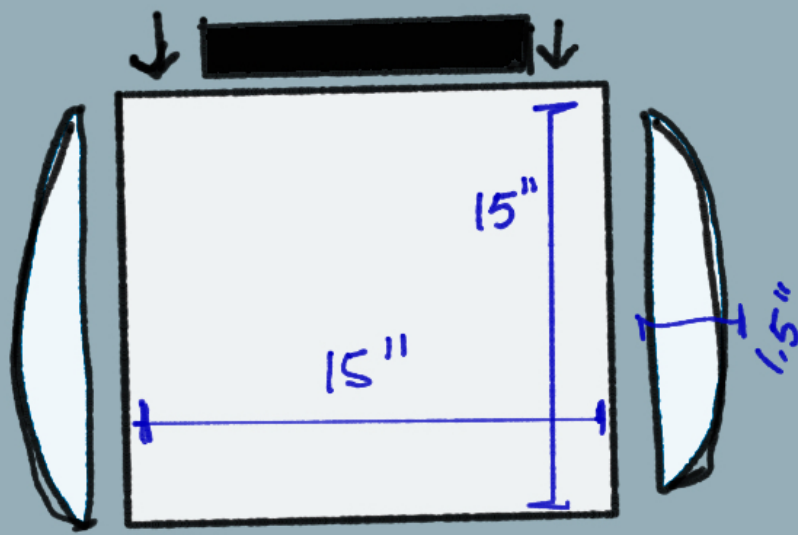
optional...

Paper Mache

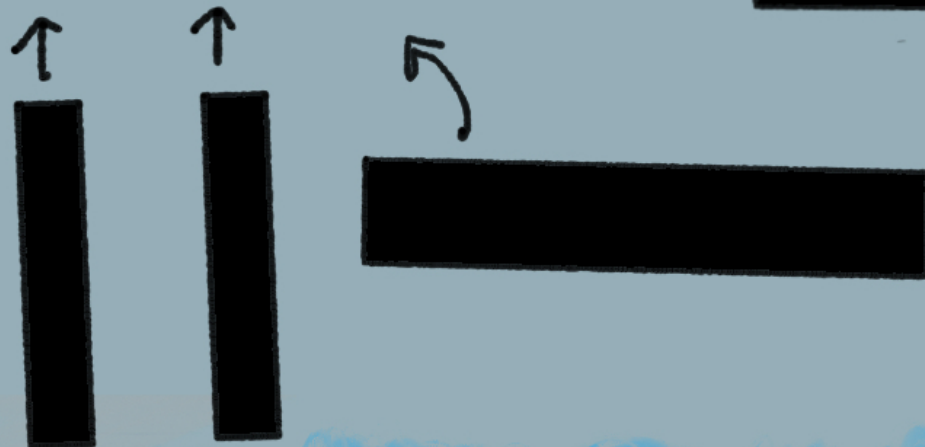
I use paper mache & homemade gesso (paint + Plaster of Paris) on all of the parts.



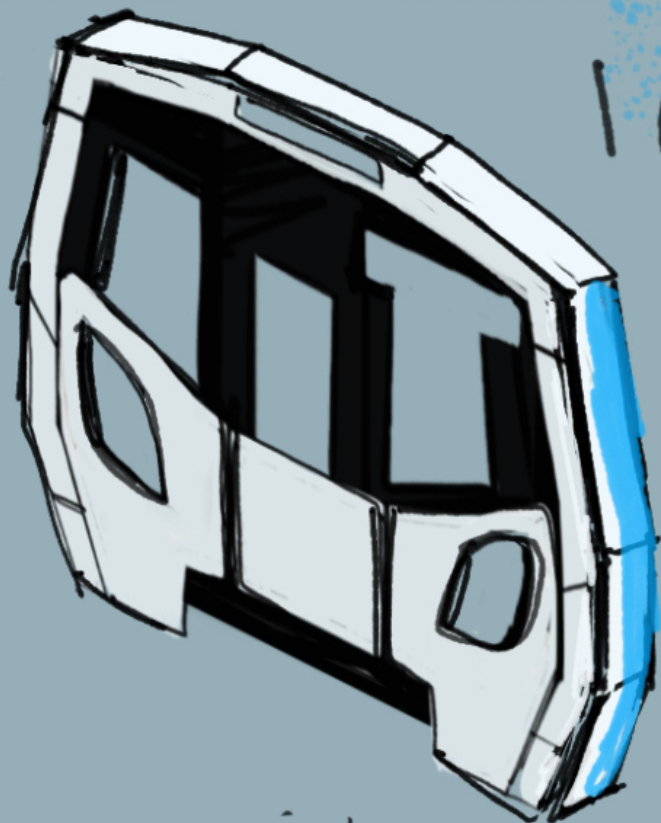
This is optional, but makes everything stronger + allows you to create a "rounded" surface! You'll have to wait for things to dry, and paint over it, though!



The BACK PANEL

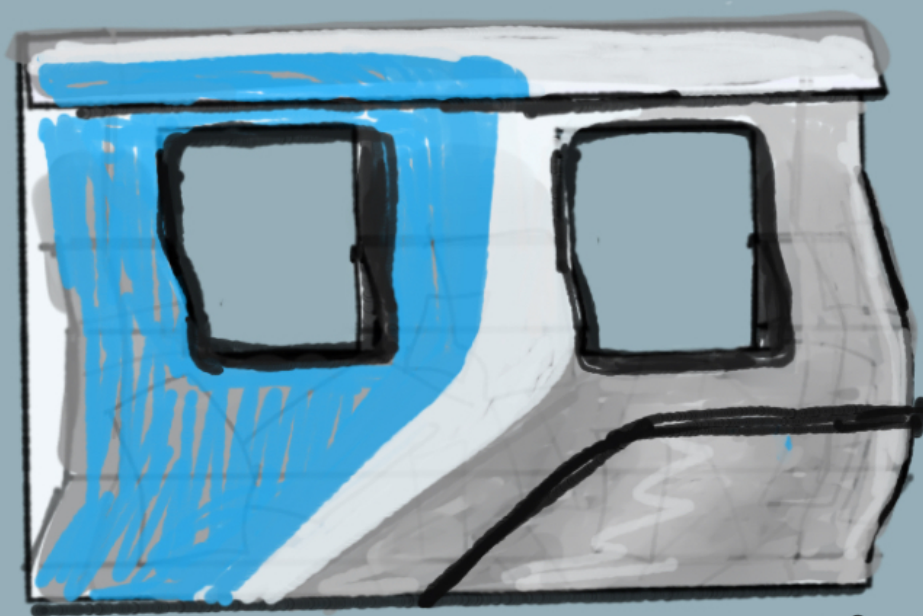


Painting Time!



I recommend using painting tape

for clean lines!



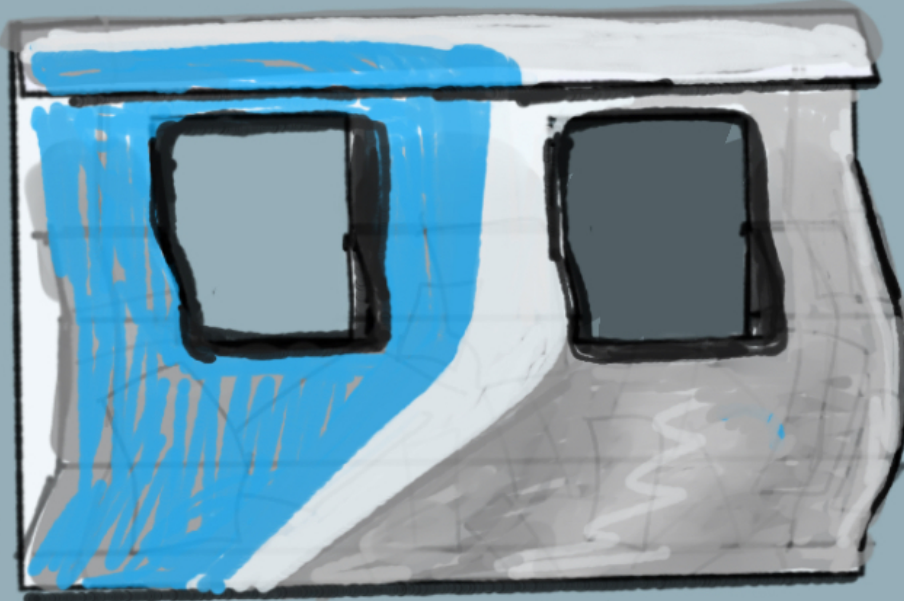
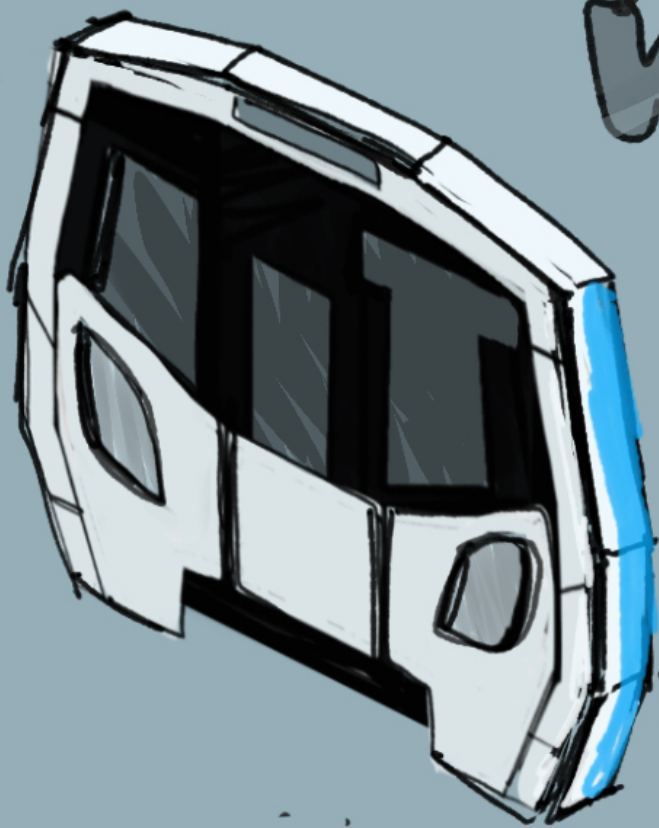
eg. black stripe,

Leave the details (black borders around the windows & headlights) until last.



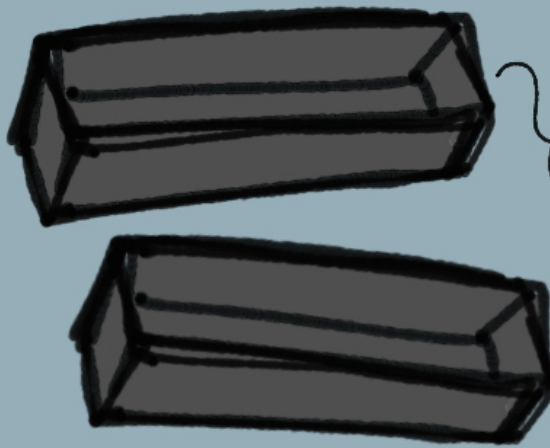
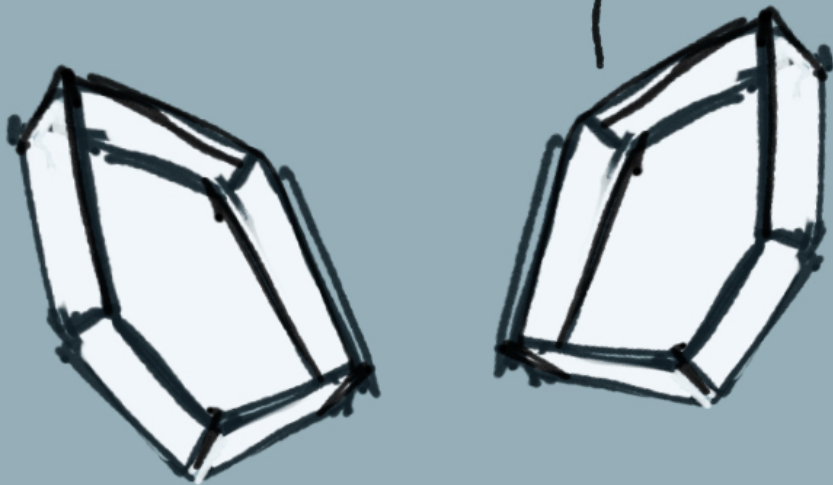
I painted doors for the back of the BART "car".

WINDOWS



Tape the semi-transparent sheets to the inside to create windows!

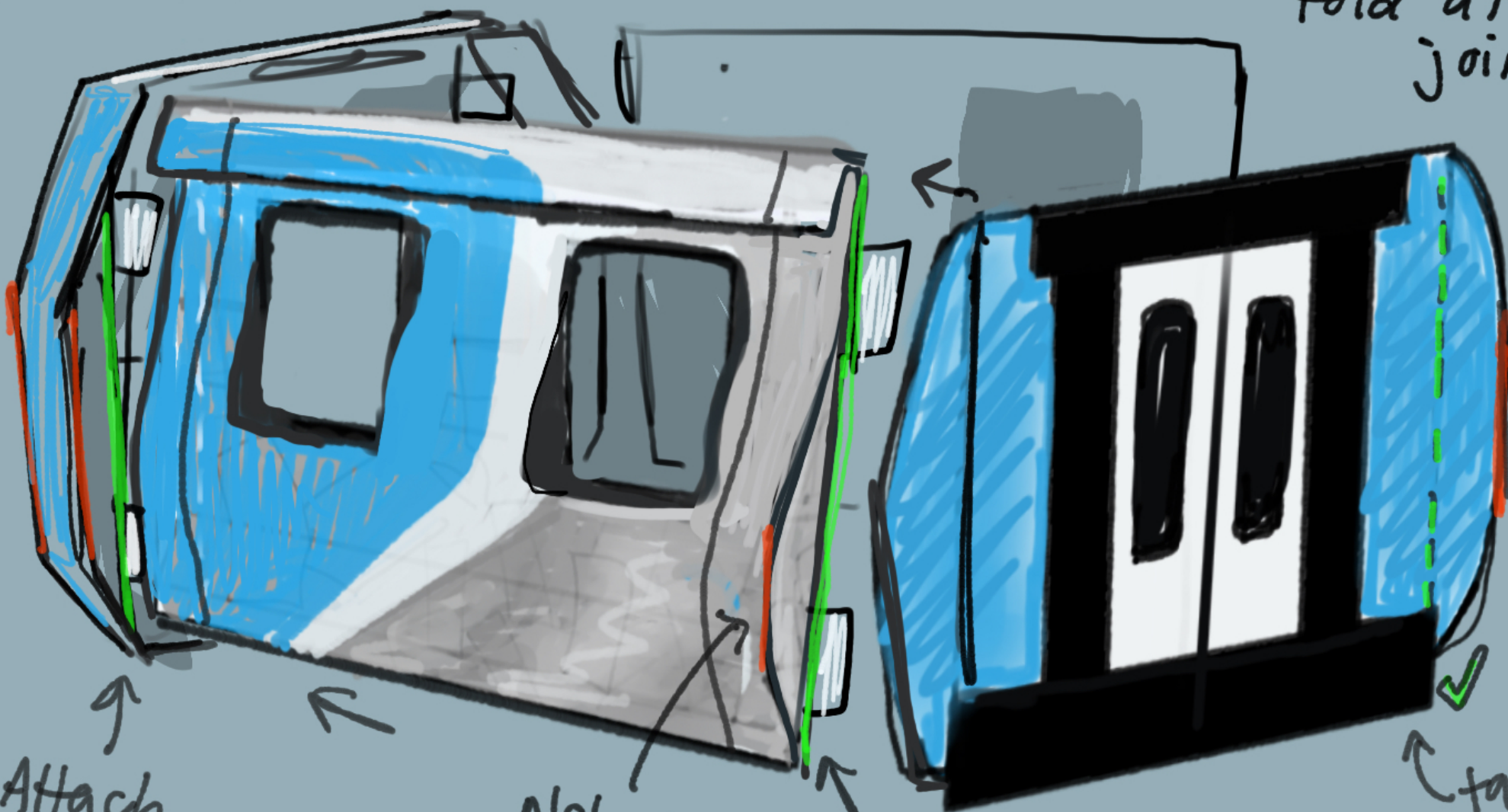
↑ I leave this window open for my hands to peek through!



I also made & taped boxes to the inside to hold the headlights & LED sign + electronics.

ATTACH

Use tape along the inside "straight" edges of each piece (so they can fold at each joint)



Attach "inside"

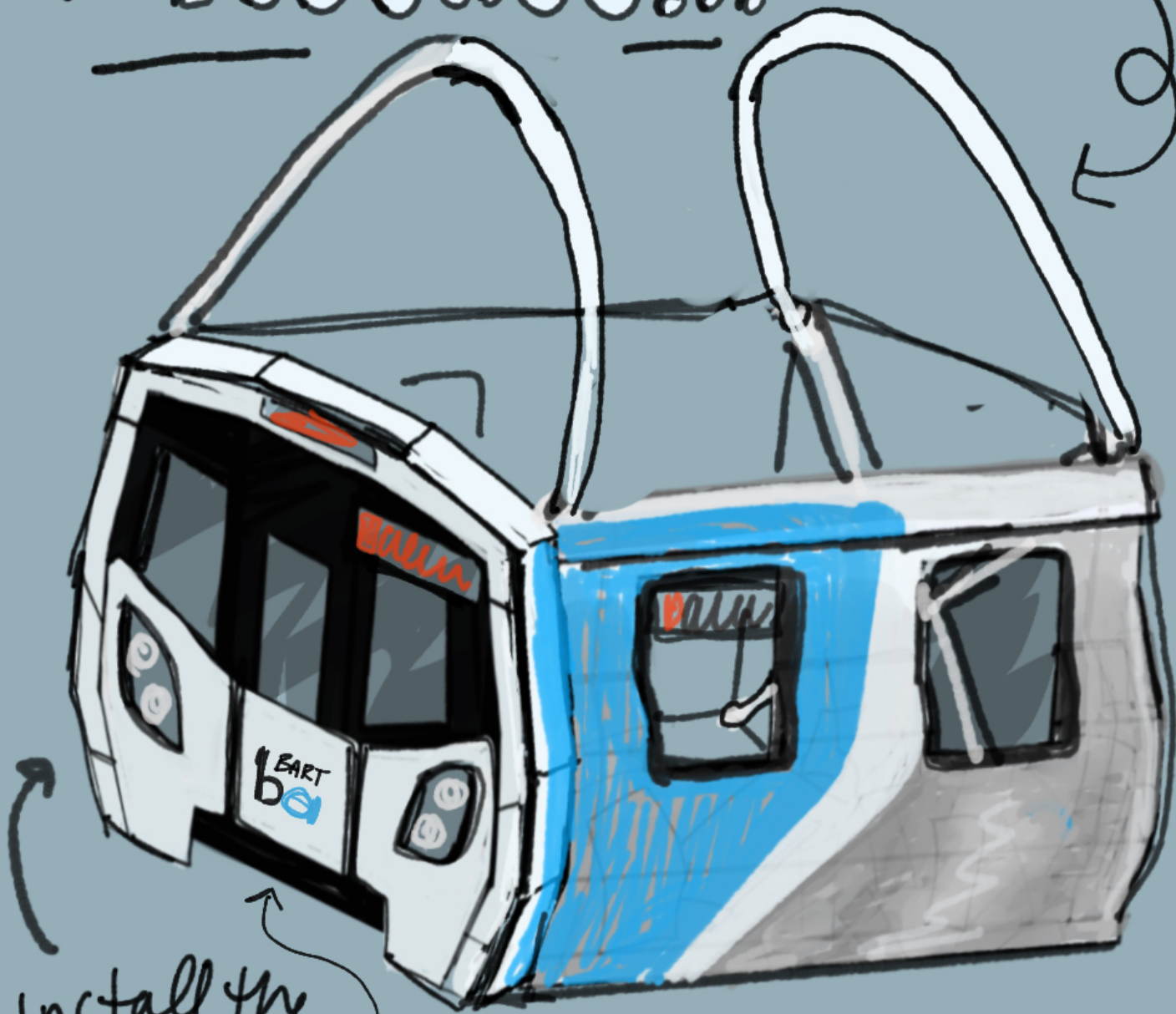
Not here X

tape here

tape here (inside)

NOT here (edge) X

Finishing Touches...



Install the
headlights &
LED signs!

Use
paint or a
sticker
to add the
BART logo!



AND
we're
DONE!

Ropes

I use macrame
rope, securing
it at each corner
with needle +
thread to make sure
it's really secure!!

I make a "loop"
for the back &
front, then tie them
together so that the
central knot will sit
behind my neck.

I put in velcro + magnets
so the costume snaps
into place

FINALLY..

Dress in BART
colors & go
trick or treat!

Happy 
Halloween!