

BETTER BART. BETTER STATIONS.



DOWNTOWN BERKELEY STATION MODERNIZATION PLAN PROJECT OVERVIEW

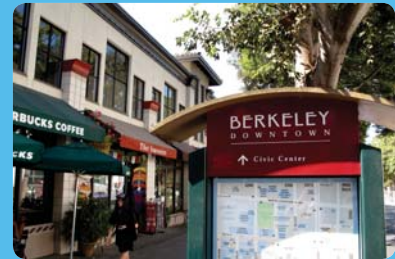
Project Purpose

Develop a phased implementation plan for improvements to modernize Downtown Berkeley Station and enhance customer experience.



Project Goals

- 1** Enhance Downtown Berkeley Station as a gateway to the City of Berkeley and the UC Berkeley campus.
- 2** Modernize and refresh the station to bring it into the 21st century.
- 3** Ensure that the station design reflects BART's sustainability goals.
- 4** Enhance access and connections between the station and the Downtown Berkeley neighborhood.
- 5** Improve the station's function, safety, capacity and appearance.
- 6** Incorporate art and community identity into the station.
- 7** Add station amenities to improve customer experience.



BETTER BART. BETTER STATIONS.



DOWNTOWN BERKELEY STATION MODERNIZATION PLAN

PROPOSED IMPROVEMENTS - STATION FUNCTION

BART is considering numerous improvements to make the Downtown Berkeley station easier to use. These changes will improve access to the station and will provide additional convenience for travel within the station.



ADDITIONAL STREET ESCALATORS

- New escalators at street entrances (Allston Way)
- Improved access to area South of station, and to East side of Shattuck Avenue
- Improved security and shelter from weather

UNIVERSAL ACCESS IMPROVEMENTS

- Improve access for all BART customers
- More accessibility measures for riders with special needs
- Updated signage, handrails and guardrails

DAYLIGHTING FIXTURES/ LIGHT TUBES

- Light tubes and other features to increase natural light in concourse
- Improved look and feel in station
- Reduce reliance on artificial lighting

REOPEN PUBLIC RESTROOMS

- Provide access to restrooms on concourse
- Renovated to improve convenience and safety



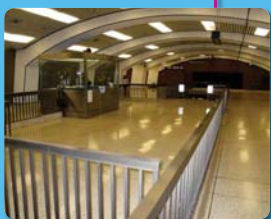
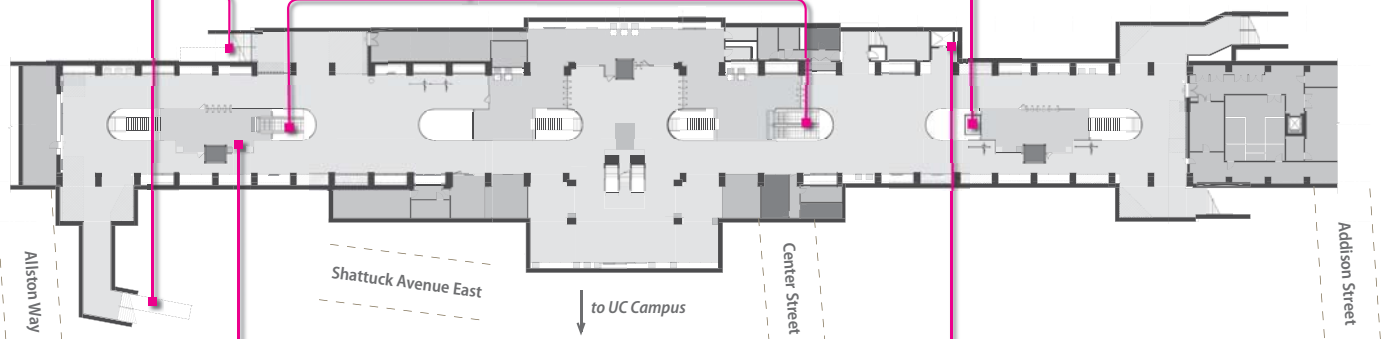
ADDITIONAL PLATFORM ESCALATORS

- Easier access between concourse and platform
- Better passenger distribution
- Enable bi-directional escalator travel



NEWLY LOCATED PLATFORM ELEVATOR

- New, improved cab
- Elevator moved inside paid area
- Convenient and safer location



REOPEN SOUTH PAID AREA

- Improve access at South end of station
- Promote better passenger distribution

STATE OF GOOD REPAIR

- Maintenance and upgrades for station infrastructure
- Upgrades to electrical and plumbing systems
- Fire detection and suppression system updates



REPLACE STREET ELEVATOR

- New elevator in same location
- Larger cab with aligned doors
- Better orientation for access and safety



BIKE ACCESS IMPROVEMENTS

- New bike track in all street entrance stairwells
- Additional bike parking options on concourse

UPGRADED PUBLIC ADDRESS SYSTEM

- Better coverage/improved clarity throughout station
- Integrated with new BART system

REAL-TIME TRAIN ARRIVAL/WAYFINDING SIGNAGE

- Additional/improved signage to direct passengers
- Real-time train arrival information for BART trains and transfers

BETTER BART. BETTER STATIONS.



DOWNTOWN BERKELEY STATION MODERNIZATION PLAN

PROPOSED IMPROVEMENTS - CUSTOMER EXPERIENCE

Ceilings, Walls, and Floors

Station-wide renovations will refresh the look and feel of the concourse and platform. These will enhance the overall aesthetics and make the station more distinct, while providing improved durability and reduced maintenance requirements.

- New materials throughout the concourse and platform
- Consistent design scheme with renovated street plaza
- New ceilings integrated with updated lighting system
- Energy-efficient adaptive lighting, with improved visibility
- Hidden routing for cabling and pipes

Concourse



Platform



Hallways



Modular Wall Design

- Provide new services and amenities
- Flexibility for future changes to station
- Reduce maintenance needs



Food/Coffee Stand



Vending Machines



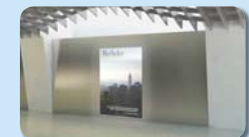
BART Tickets



Transit Information



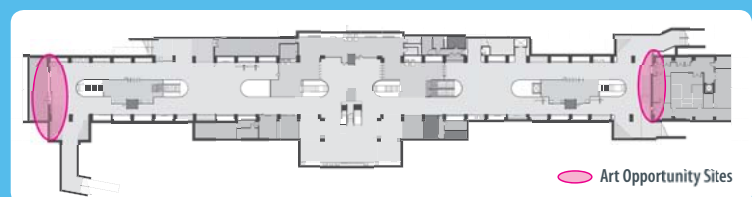
Advertising Option 1



Advertising Option 2

Public Art Opportunities

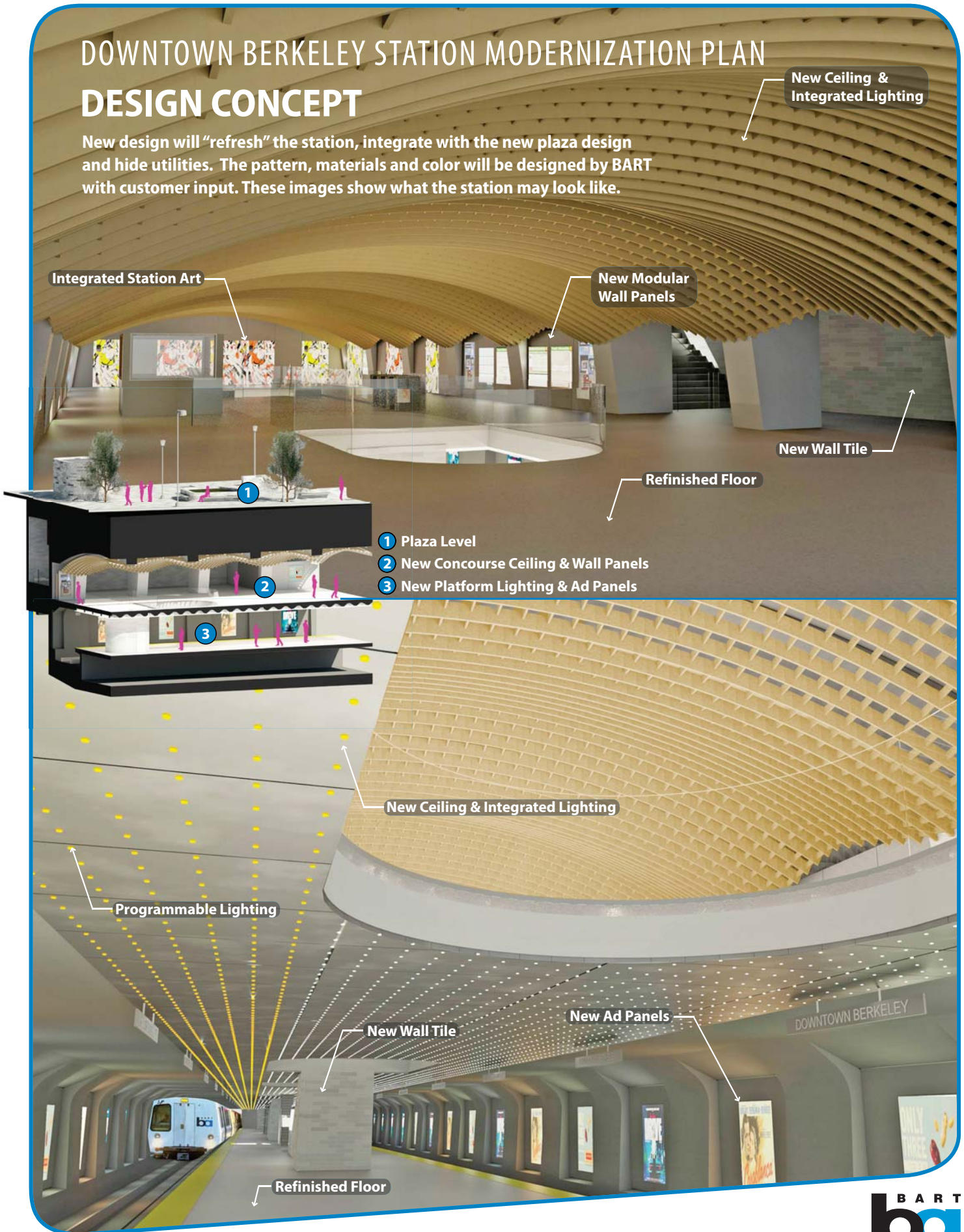
- Installations to be selected in the future through a community process
- Incorporate art elements into station design
- Create strong station identity
- Promote culture of the neighborhood
- Partnerships with local artists and institutions



BETTER BART. BETTER STATIONS.

DOWNTOWN BERKELEY STATION MODERNIZATION PLAN DESIGN CONCEPT

New design will “refresh” the station, integrate with the new plaza design and hide utilities. The pattern, materials and color will be designed by BART with customer input. These images show what the station may look like.



BETTER BART. BETTER STATIONS.



DOWNTOWN BERKELEY STATION MODERNIZATION PLAN

PROPOSED PHASING AND IMPLEMENTATION

The proposed phasing below is based on customer input, opportunities for construction efficiencies, and potential funding availability. Each phase takes 3-4 years to implement from design to construction. Improvements will be phased as funding becomes available. BART will continue to seek local, state and federal funding for implementation.

<p>Phase 1</p>	<ul style="list-style-type: none"> • Station infrastructure upgrades • Reopen South fare entrance/paid area • Universal accessibility upgrades • Bike channels and bike parking • New platform elevator (relocated) • Retail • Concourse ceiling/wall/floor treatments • Concourse energy-efficient lighting • Public restrooms pilot program • Public art (1-2% of phase budget) 	 <p>Platform Elevator</p>	 <p>Concourse Upgrades</p>
<p>Phase 2</p>	<ul style="list-style-type: none"> • Station infrastructure upgrades • Upgraded public address system • Replace street elevator • New south platform escalator • Platform ceiling/wall/floor treatments • Platform energy-efficient lighting • Public art (1-2% of phase budget) 	 <p>Street Elevator</p>	 <p>Platform Upgrades</p>
<p>Phase 3</p>	<ul style="list-style-type: none"> • Add street escalators • New central platform escalator • Increased natural lighting • Public Art (1-2% of phase budget) 	 <p>Street Escalator</p>	 <p>Natural Light Fixture</p>

CUSTOMER INPUT

At the project start in 2015, BART held two in-station public information events and conducted a public survey. We received 1,388 survey responses. Your input informed BART's selection of planned improvements to the station.

Thanks for your comments and suggestions!

Input from BART customers and Downtown Berkeley stakeholders is a key part of our planning process. We want to hear about your priorities for implementing projects to help guide overall phasing.

Help us prioritize future station improvements!

Take our online survey at:

www.surveymonkey.com/r/DTBerkeleyBART