

BART Irvington Station

Summary of Activity

Surveying & geotechnical investigations including soil sampling and borings in support of the design of the Irvington BART Station.

Start of Activity

November 2019

Anticipated Completion

February 2021

Anticipated Impacts

- Increased noise and vibration from equipment.

General Work Hours

7 a.m. to 5 p.m. – except for investigative work in the BART trackway, which must be done at night.

For More Information

📞 Call:
(510) 476-3900

Please leave a message and we will try to respond within one business day.

✉ Email:
bartwarmsspringsextension@bart.gov

🌐 Visit:
BART's Website –
www.bart.gov/wsx

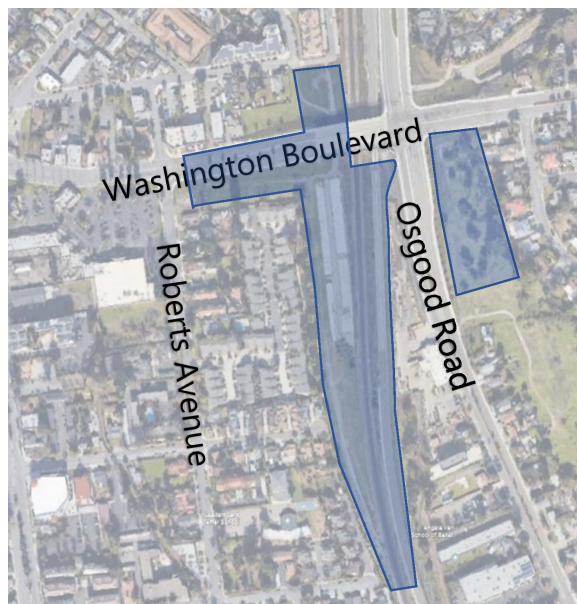
City of Fremont's Website –
Fremont.gov/2977/Irvington-BART-Station

REV 11/23/2020

Notification #1 Irvington Station Project Surveying & Geotechnical Investigations

REVISED November 2020

Design is in progress for the Irvington Station component of the BART Warm Springs Extension (WSX) project. To support this effort, BART contractors will be on site sporadically to conduct geotechnical investigations in the Irvington Station area starting in November 2019. These investigations will include surveying, soil sampling and other related activities. There may be increased noise and vibration near the station site from the equipment used. Visit www.bart.gov/wsx for specific work dates and other updated information.



General Work Area for Irvington Surveying & Boring Investigations

About the Irvington Station Project

The future Irvington BART Station is currently in design and will be located approximately halfway between the existing Fremont and Warm Springs / South Fremont stations. The City of Fremont has secured \$120 million in funding for the station through Alameda County Transportation Commission's Measure BB, which was approved by voters in 2014, and an additional \$2 million in funding through the Metropolitan Transportation Commission Regional Measure 2. Planning and environmental work led by the City of Fremont was completed in Summer 2019 and the preliminary engineering work led by BART was completed in Summer 2020. The project is now in the final design phase, which will last approximately two years. For more information visit the BART website at www.bart.gov/wsx or the City of Fremont's website at <https://fremont.gov/2977/Irvington-BART-Station>.

